

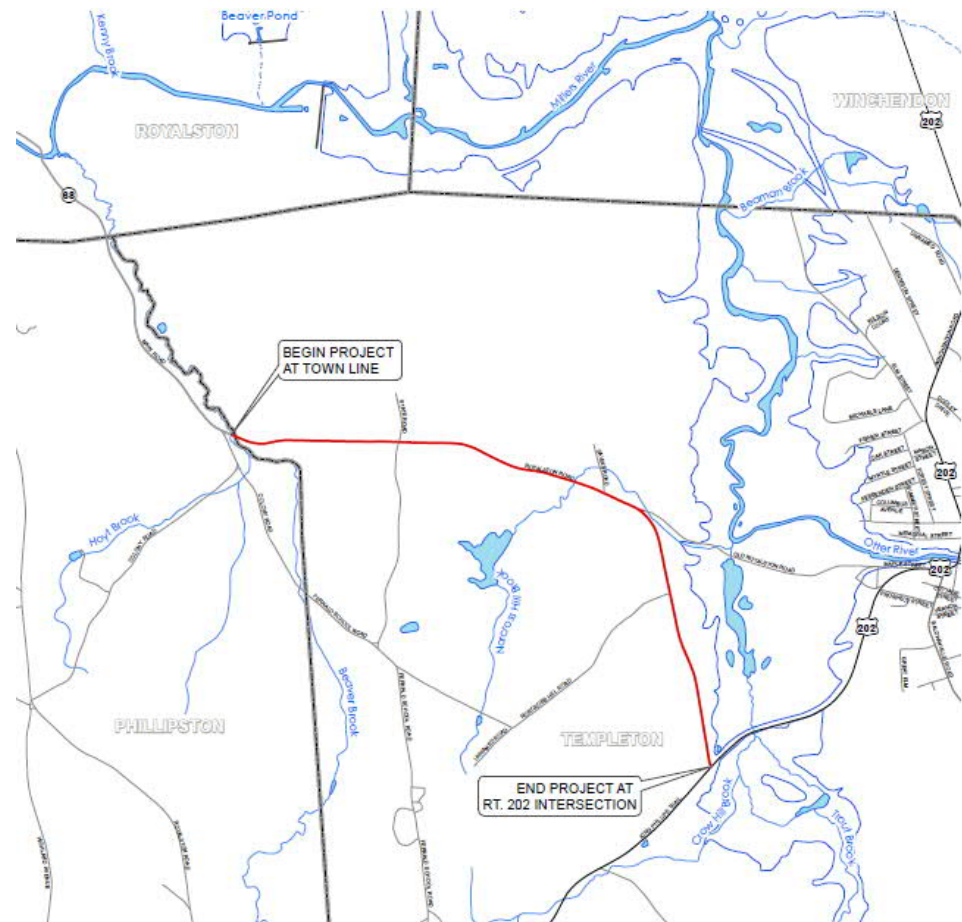


Reconstruction of Royalston Road (Route 68)

Town of Templeton, MA
Montachusett MPO Presentation – MassDOT Project # 608424
February 20, 2019

Project History

- Project Initiation Attempt – 2002
Letter to MassHighway looking for funding assistance
- Project Initiation – January 2016
PNF/PIF forms submitted by Town to apply for funding through MassDOT
- Pre-25% Submission to MassDOT – May 2016
- 25% Submission to MassDOT – February 2017
- 25% Design Public Hearing– December 2018



Project Goals

Improve pavement condition and extend service life

Provide better accommodations for bicycle and pedestrians

Improve storm water management

Limit disturbance to environmental resources

Update roadway infrastructure (i.e.. Guardrails, signs)

Stabilize roadside slopes

Improve vertical roadway geometry

Improve safety for all users



"Our mission is to deliver excellent customer service and safety to people traveling in the Commonwealth. We work to provide our nation's safest and most reliable transportation system to strengthen our economy and quality of life."

-MassDOT Mission Statement

Existing Conditions



Poor Pavement Condition
Rutting and cracking due to subbase failure and inadequate drainage

Existing Conditions



Existing Conditions



Truck Traffic

Comprises >9% of vehicles traveling on Royalston Road

Concerns about load shifting due to uneven pavement surface

Existing Conditions



Flooding at Norcross Brook

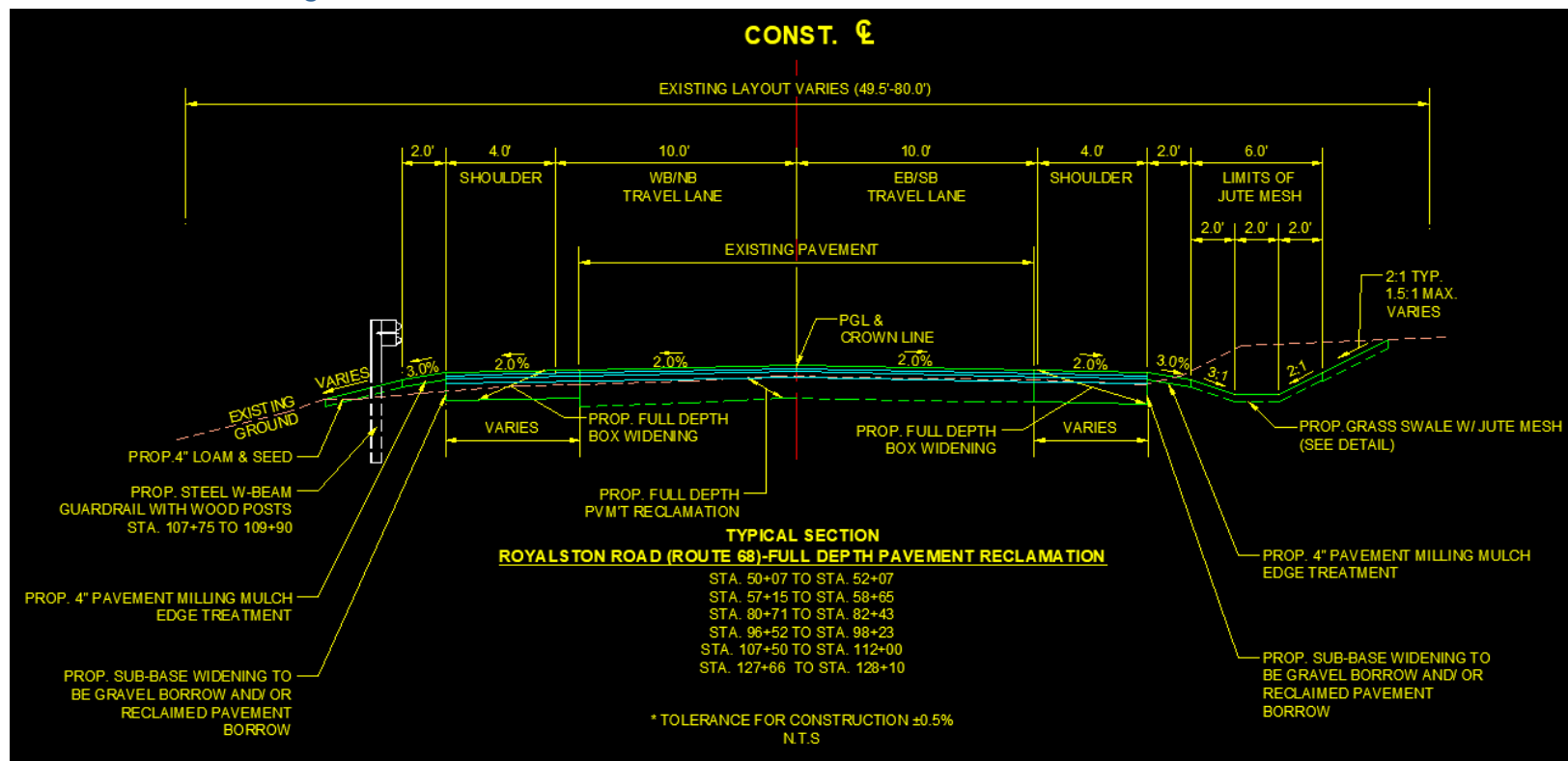


Collapsed headwall at a cross culvert

Proposed Conditions

Current Estimated Construction Cost
\$4.05M

Current Estimated Total Project Cost
\$5.05M (Includes Utility Relocations, Police Detail,
Construction Contingencies)

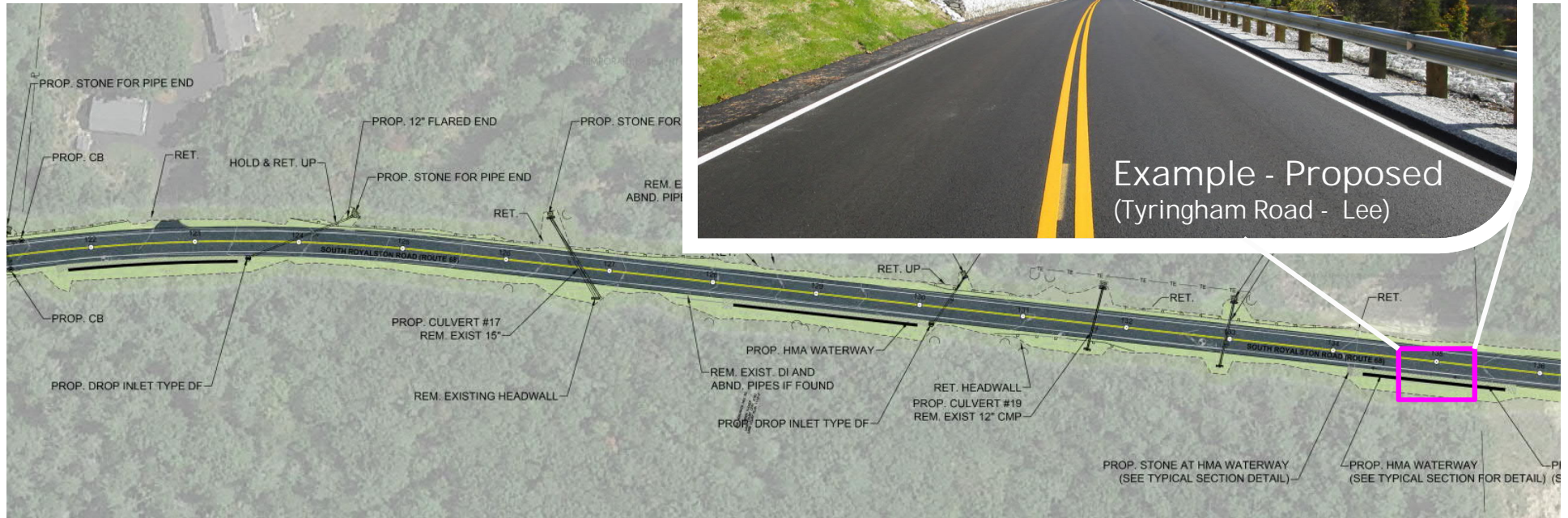


Addition of grass swales and closed drainage system
Properly handle stormwater runoff to prevent future pavement failure and flooding



FUSS & O'NEILL

Proposed Conditions

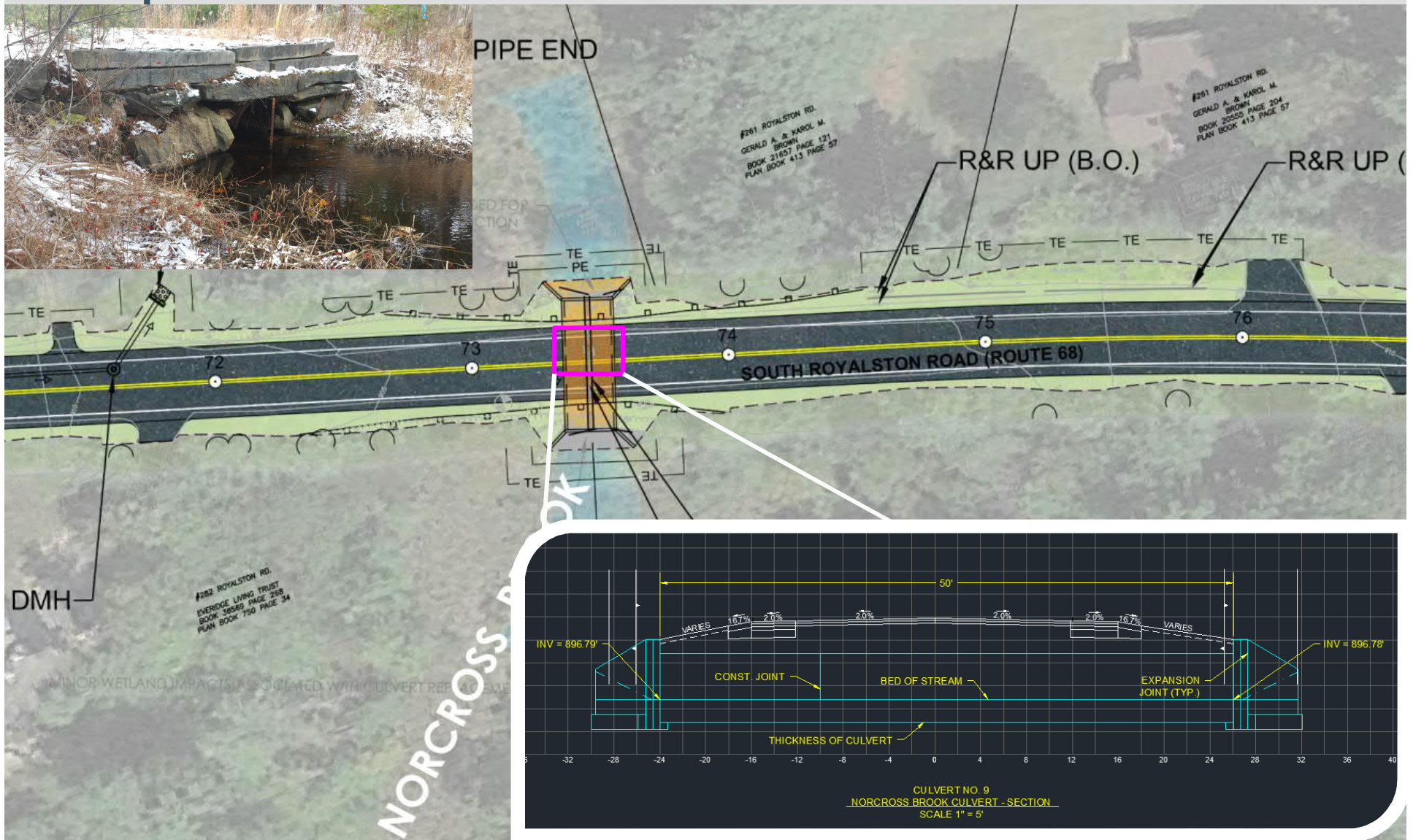


Retaining walls, slope stabilization, and guardrails

Gravity retaining walls and other modified rock and geotextiles for slope stabilization

Guardrail addition at areas with inadequate clear zone widths and replacement at existing locations

Proposed Conditions

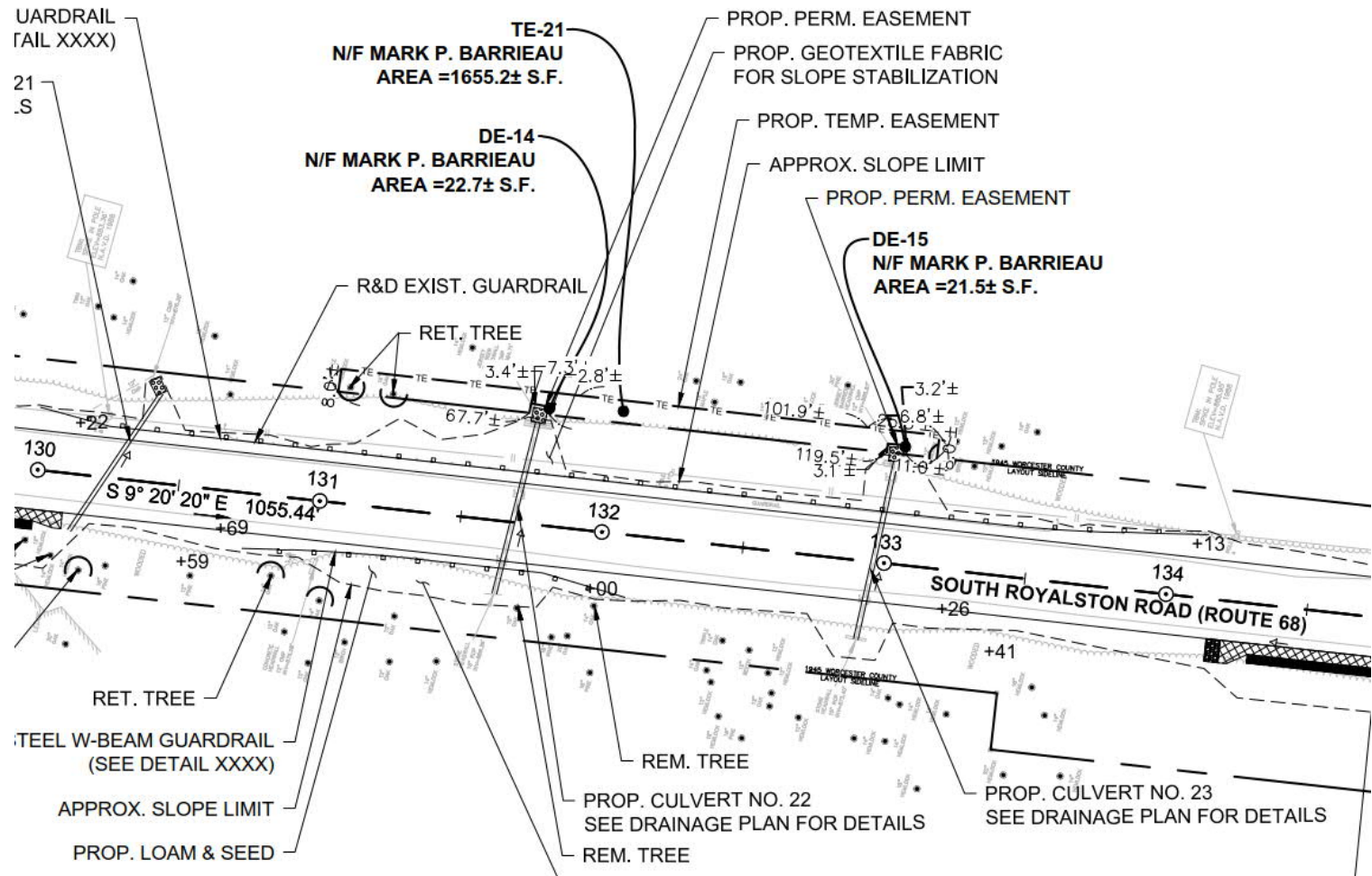


Norcross Brook culvert replacement
Also replacing another major culvert serving bordering wetland resources

Proposed Conditions



Proposed Conditions - ROW



Right-of-Way

Permanent Drainage Easements – for culvert outlet repairs/replacements

Temporary Easements - for replacement of driveway aprons, turf re-establishment, grading, and general construction activities that will not affect long term usage of property

Feedback?
