

Adam D. Lamontagne

From: Vuto, Michelle <Vuto.Michelle@epa.gov>
Sent: Wednesday, May 8, 2019 2:32 PM
To: Szocik, Bob
Cc: Adam D. Lamontagne; Terenzini, Carter; Civian, Frederick (DEP)
Subject: RE: Templeton small MS4 NOI

Thank you, Bob. Templeton's NOI is complete.

Best,
Michelle

Michelle Vuto
Stormwater & Construction Permits
U.S. EPA Region 1
5 Post Office Square (06-4)
Boston, MA 02109-3912
617-918-1222

From: Szocik, Bob <bszocik@templetonma.gov>
Sent: Wednesday, May 08, 2019 12:58 PM
To: Vuto, Michelle <Vuto.Michelle@epa.gov>
Cc: Adam D. Lamontagne <alamontagne@TempletonMA.gov>; Terenzini, Carter <cterenzini@TempletonMA.gov>; Civian, Frederick (DEP) <frederick.civian@state.ma.us>
Subject: Templeton small MS4 NOI

Small MS4 NOI Additional Information As Requested

MS4 Operator: Town of Templeton

NPDES ID: MAR041225

2003 Information: Please find attachment of our system including outfalls.

Prohibit Illicit Discharge Detection and Elimination: The Town of Templeton has completed an Illicit Discharge and Detection Elimination (IDDE) Program as part of the Town's Comprehensive Stormwater Management program. A bylaw governing discharges to the Municipal Storm Drain System was approved at Annual Town Meeting in 2007. A Stormwater Management bylaw regulating disturbance of one acre or more was passed at Special Town Meeting in March 2008.

Manage Construction Site Stormwater Runoff Control: The Stormwater Management Bylaw governing the disturbance of one acre or larger was passed at Special Town Meeting on March 6, 2008 and approved by the Attorney General's Office on May 29, 2008.

Manage Post-Construction Stormwater Management in New Development and Redevelopment: The Stormwater Management Bylaw covering post construction runoff that was passed at the Special Town Meeting on March 6, 2008.

ESA eligibility: Templeton affirms that our planned discharge activities will not adversely affect the endangered species present.

Public Education MCM: Templeton plans to provide the required 2 messages to industrial sector by the end of year 5 of the permit. The BMP Media/Category will be webpage. The BMP Description will be informational links with a targeted audience of Industrial Facilities and the responsible department/parties will be planning/zoning department. The measurable goal will be education resource available to residents with a beginning year of BMP implementation of 2019.

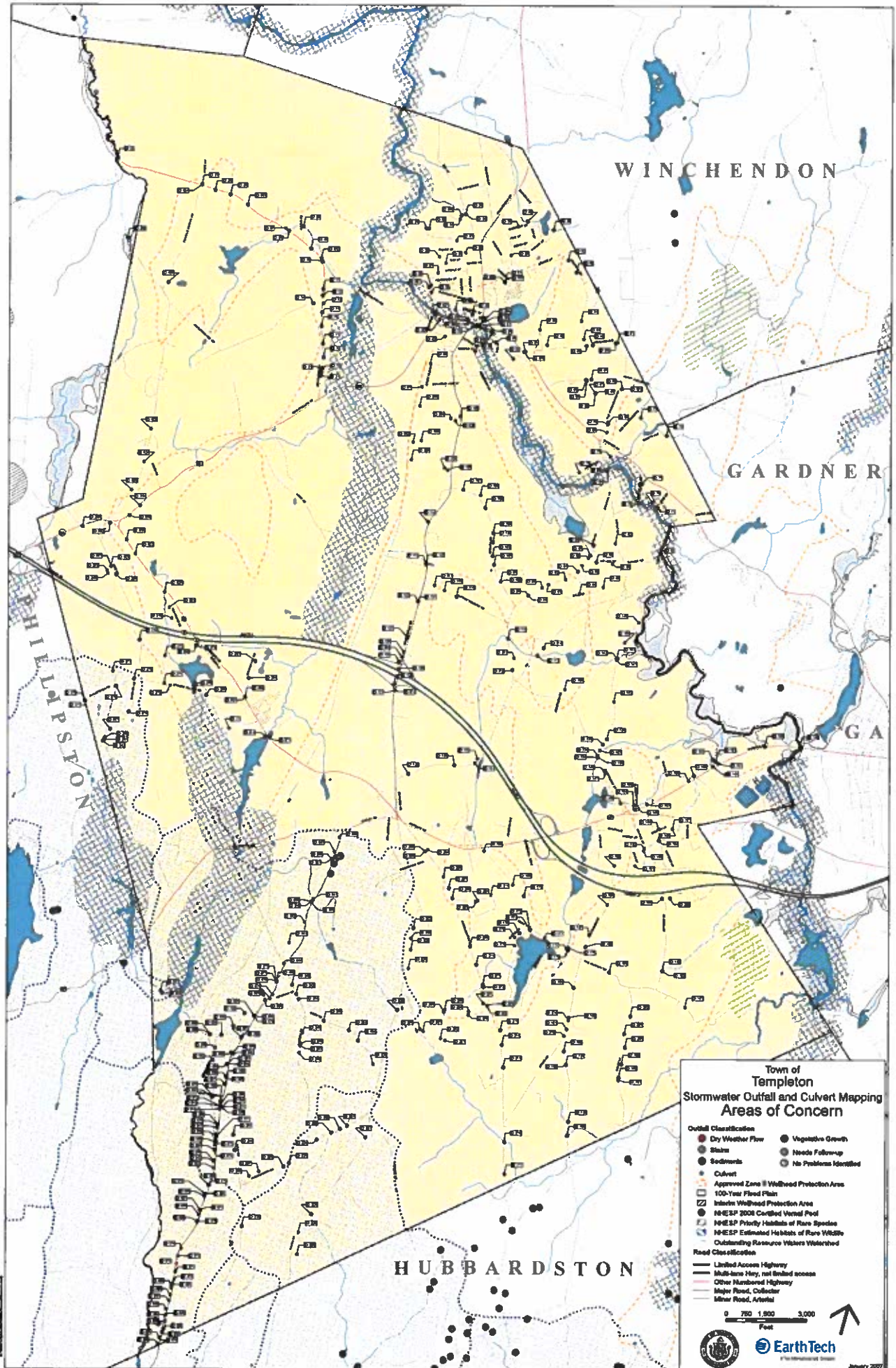
TMDLs: Templeton affirms that the Town of Templeton will follow the requirements in part B.I. of Appendix F for nitrogen for the Long Island Sound.

Bob Szocik

Bob Szocik
DPW Director



Templeton DPW
381 Baldwinville Rd
Templeton, MA 01468
Phone 978-939-8666 - Fax 978-939-8420
bszocik@templetonma.gov



**Town of
Templeton
Stormwater Outfall and Culvert Mapping
Areas of Concern**

Outfall Classification

● Dry Weather Flow	● Vegetative Growth
● Slains	● Needs Follow-up
● Sediments	● No Problems Identified
● Culvert	

Approved Zone II Wetland Protection Area
 100-Year Flood Plain
 Interim Wetland Protection Area
 NHEHP 2008 Corridor Wetland Pool
 NHEHP Priority Habitats of Rare Species
 NHEHP Estimated Habitats of Rare Wildlife
 Outstanding Resource Waters Watershed

Road Classification

— Limited Access Highway
— Multi-lane Hwy, not limited access
— Other Numbered Highway
— Major Road, Collector
— Minor Road, Arterial

0 750 1,500 3,000
 Feet

EarthTech
 Environmental Solutions
 January 2007